

COLONIAL[®] GAS

STEAM SERIES CGSA - Series II

Designed for reliability, efficiency and performance. For residential and small commercial applications with approved chimney.

**NEAR BOILER
PIPING KITS
NOW AVAILABLE**
(See back for details.)



NATIONAL

PROUDLY MADE IN THE USA



- ★ Cast iron heat exchanger
- ★ Stainless steel burners
- ★ Built-in draft diverter to fit low spaces
- ★ Automatic vent damper included
- ★ Attractive, rugged jacket
- ★ Seven inputs from 69 to 276 MBH
- ★ Designed for installation on combustible floors

COLONIAL[®] GAS STEAM SERIES CGSA-SERIES II

TECHNICAL SPECIFICATIONS

CGSA SPACE HEATING RATINGS NATURAL AND LP GAS						NO. OF SEC.	DIMENSIONS (IN.)				SHIPPING WEIGHT (LBS)
NATIONAL MODEL NUMBER	INPUT (MBH)	HEATING CAPACITY (MBH)	AHRI NET RATING STEAM (MBH)		AFUE (%)		"A" (in)	"B" (in)	"C" (in)	"D" (in)	
			SQ. FT.	MBH							
CGSA-57-S2	69	57	179	43	82.0	3	12-3/4	28	40-7/16	4	365
CGSA-85-S2	103	85	267	64	82.0	4	16	28	40-7/16	5	432
CGSA-113-S2	138	113	354	85	82.0	5	19-1/4	28	40-7/16	6	504
CGSA-142-S2	172	142	446	107	82.1	6	22-1/2	28	40-7/16	6	589
CGSA-171-S2	207	171	533	128	82.1	7	25-3/4	30	40-7/16	7	669
CGSA-199-S2	241	199	621	149	82.2	8	29	30	40-7/16	7	745
CGSA-229-S2	276	229	717	172	82.2	9	32-1/4	30	40-7/16	8	826

1. Not for use at altitudes above 2,000 ft. in natural or LP gas.

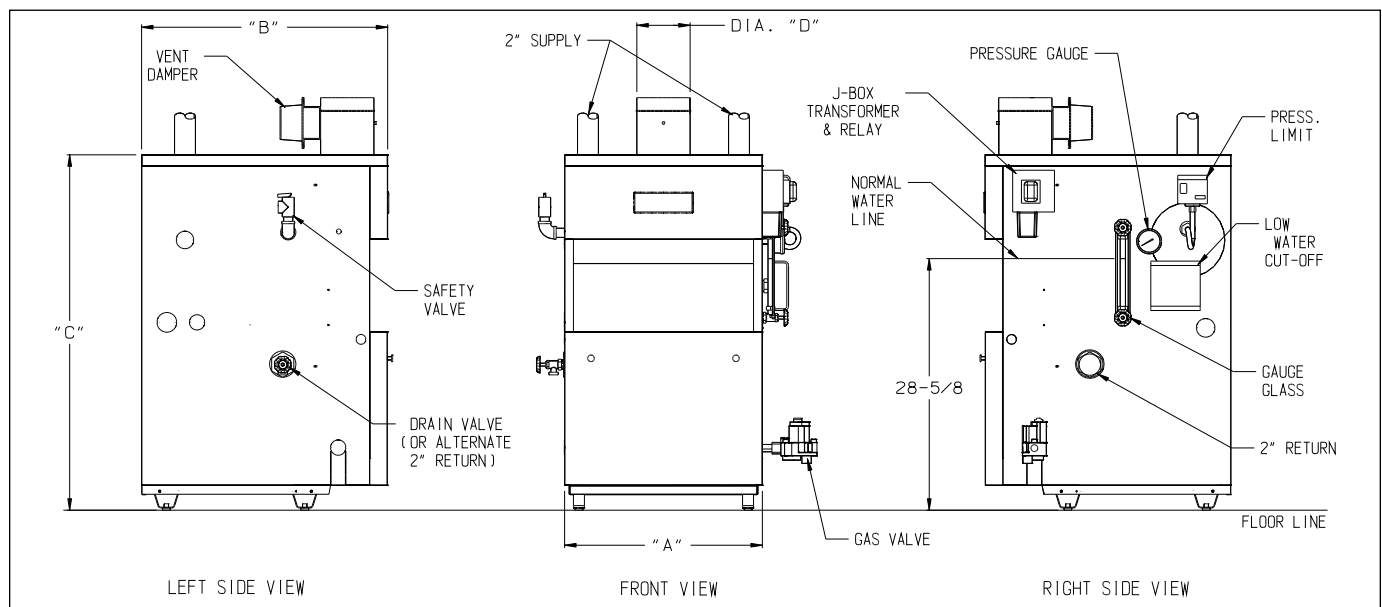
ADDITIONAL FEATURES/BENEFITS

- Available with natural or LP gas
- Probe style low water cut-off
- Isolation relay simplifies thermostat wiring
- Redundant gas valve
- Roll-out switch; blocked vent switch
- Glass water level gauge set

Near Boiler Piping Kit:

CGSA Near Boiler Piping Kits are designed to save time and money. The near boiler piping kit will assist in delivering "dry" steam to the heating system, reduce short cycling, eliminate water hammering and protect against system flooding. Kit includes all components required to complete the near boiler piping as recommended in the installation manual. Glass water level gauge set.

All residential cast iron steam boilers include a full one-year warranty. A 12-year limited warranty is provided for the heat exchanger.



Specifications are subject to change without notice.

