

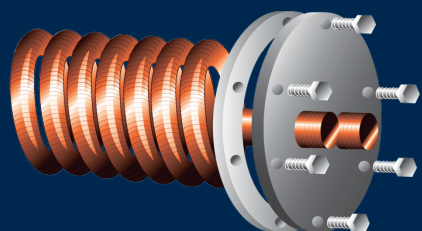
EAGLE® OIL WATER Series III

Designed for reliability, high efficiency and performance for residences with chimneys.

DOMESTIC HOT WATER OPTION

The Eagle's optional tankless coil feature eliminates the need for a separate water heater.

It is therefore ideal for installation in small spaces.



NATIONAL

PROUDLY MADE IN THE USA



- ★ Rugged wet base, cast iron heat exchanger
- ★ Cast iron swing-open burner door for easy service
- ★ Optional front-mounted tankless coil for domestic hot water supply
- ★ Standard Beckett AFG burner
- ★ Hydrolevel Hydrostat with low water cut-off
- ★ Includes barometric draft control

Limited Lifetime Warranty

EAGLE® OIL WATER - SERIES III TECHNICAL SPECIFICATIONS

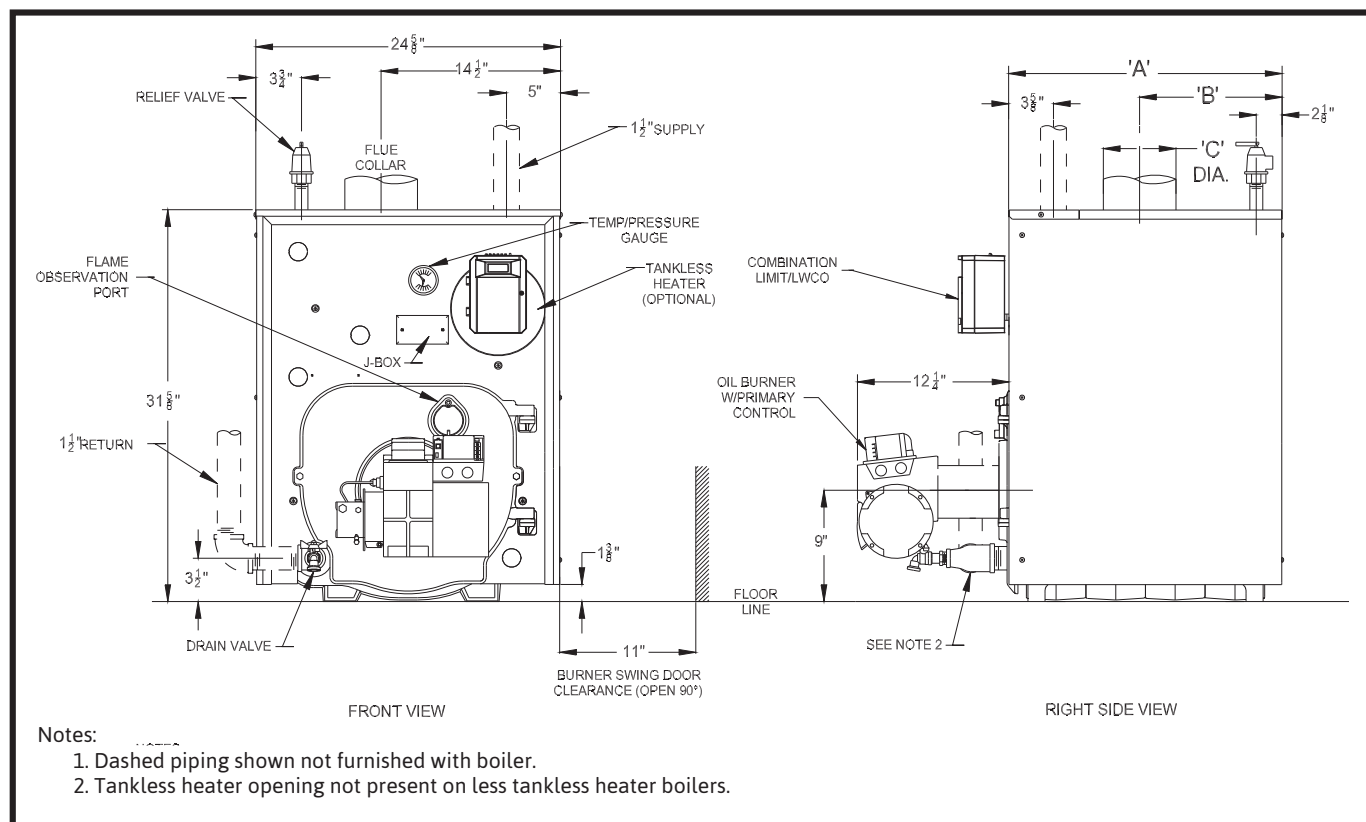
E*-OW SPACE HEATING RATINGS					NO. OF SECS.	TANKLESS HEATER	DIMENSIONS			SHIPPING WEIGHT
NATIONAL MODEL NUMBER	BURNER INPUT	HEATING CAPACITY	AHRI NET RATING WATER	AFUE (%)			"A"	"B"	"C"	
	(GAL/HR)	(MBH)	(MBH)				(in.)	(in.)	(in.)	
E3-OW-80-S3	0.65	80	70	87.3	3	2.75	17-3/8	8-15/16	6	560
E3-OW-92-S3	0.75	92	80	87.0	3	3.00	17-3/8	8-15/16	6	560
E3-OW-122-S3	1.00	122	106	86.3	3	3.25	17-3/8	8-15/16	6	560
E4-OW-148-S3	1.20	148	129	87.0	4	3.75	22-3/8	10-13/16	7	680
E4-OW-182-S3	1.50	182	158	86.0	4	4.00	22-3/8	10-13/16	7	680
E5-OW-214-S3	1.75	214	186	86.4	5	4.25	27-3/8	13-5/16	8	800
E5-OW-231-S3	1.90	231	201	86.1	5	4.75	27-3/8	13-5/16	8	800

Notes:

1. Net Ratings are based on piping and pick-up allowances of 1.15. The manufacturer should be consulted before selecting a boiler for installations having unusual piping and pickup requirements, such as intermittent system operation, extensive piping systems, etc.
2. Burner Capacity Rating, GPH is based on #2 oil with a Gross Heating Value equal to 140000 BTU/Gal.
3. Tankless heater ratings based on 40F inlet water, 140F outlet water, and 190F boiler water. Ratings are also based on 5 minute intermittent draws with 10 minutes between draws.

ADDITIONAL FEATURES/BENEFITS

- Three physical sizes with seven firing rates
- Attractive split jacket easily removed for servicing
- Equipped with burner disconnect



Specifications are subject to change without notice.

